

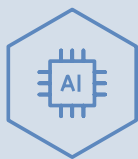
Smart home accessories for the NIBE S-series



NIBE's wireless accessories help you get the most out of the S-series. What that means for you is new opportunities to improve your indoor comfort to suit your needs while consuming less energy. If you have a connected NIBE heat pump, you can already control and monitor your heating and ventilation system simply and easily using myUplink. The new smart accessories give you even greater precision and comfort.

The accessories are small units which are easily mounted on the wall and connected to your NIBE S-series installation. You can sit back and relax while your heating installation automatically adjusts the temperature, humidity and CO₂ level – or you can adjust them manually to suit your needs.

The NIBE S-series is a natural part of your connected home. Smart technology adjusts the indoor climate automatically while you exercise complete control from your phone or tablet. Maximum comfort and minimum energy consumption – and you're doing nature a favour at the same time



- **For more comfortable, precise indoor climate control.**
- **Temperature, humidity and CO₂ content are automatically adjusted by the heat pump for high comfort and low energy consumption – or manually, as desired.**
- **Part of your energy-saving smart home in combination with a NIBE S-series heat pump/indoor module.**

Zones for a comfortable indoor climate

Zones

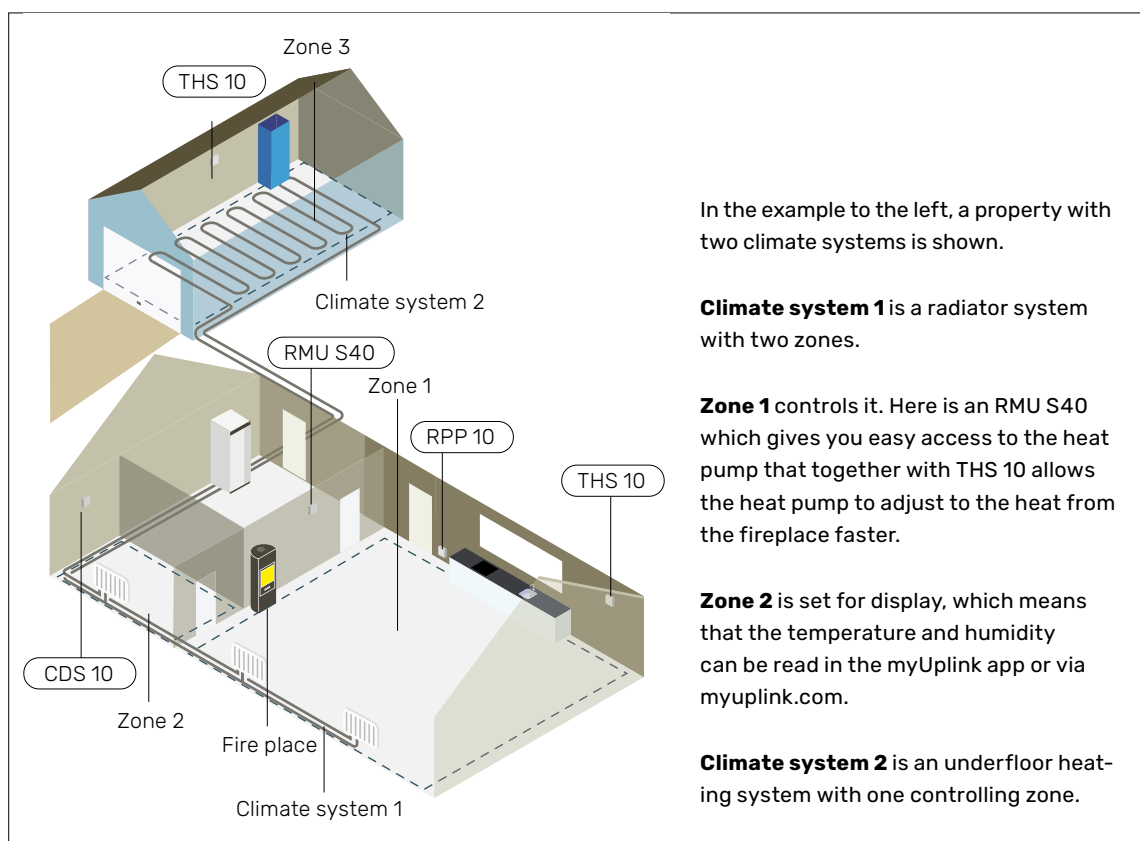
Dividing your home into climate systems and zones is the basis for achieving a comfortable indoor climate with the help of the smart accessories. Start by considering your heating, humidity and air quality needs and how they differ from floor to floor and from room to room.

When you connect your smart accessories to your installation, you easily create and name your climate systems and zones. You can have up to eight climate systems, each containing a number of zones.

For example, if your house has a basement, ground floor and top floor you can decide to make each floor a climate system. If your ground floor is open plan, with a kitchen and living room, you could define two to three zones, each of them containing one or more smart accessories.



Diagram showing climate systems and zones.



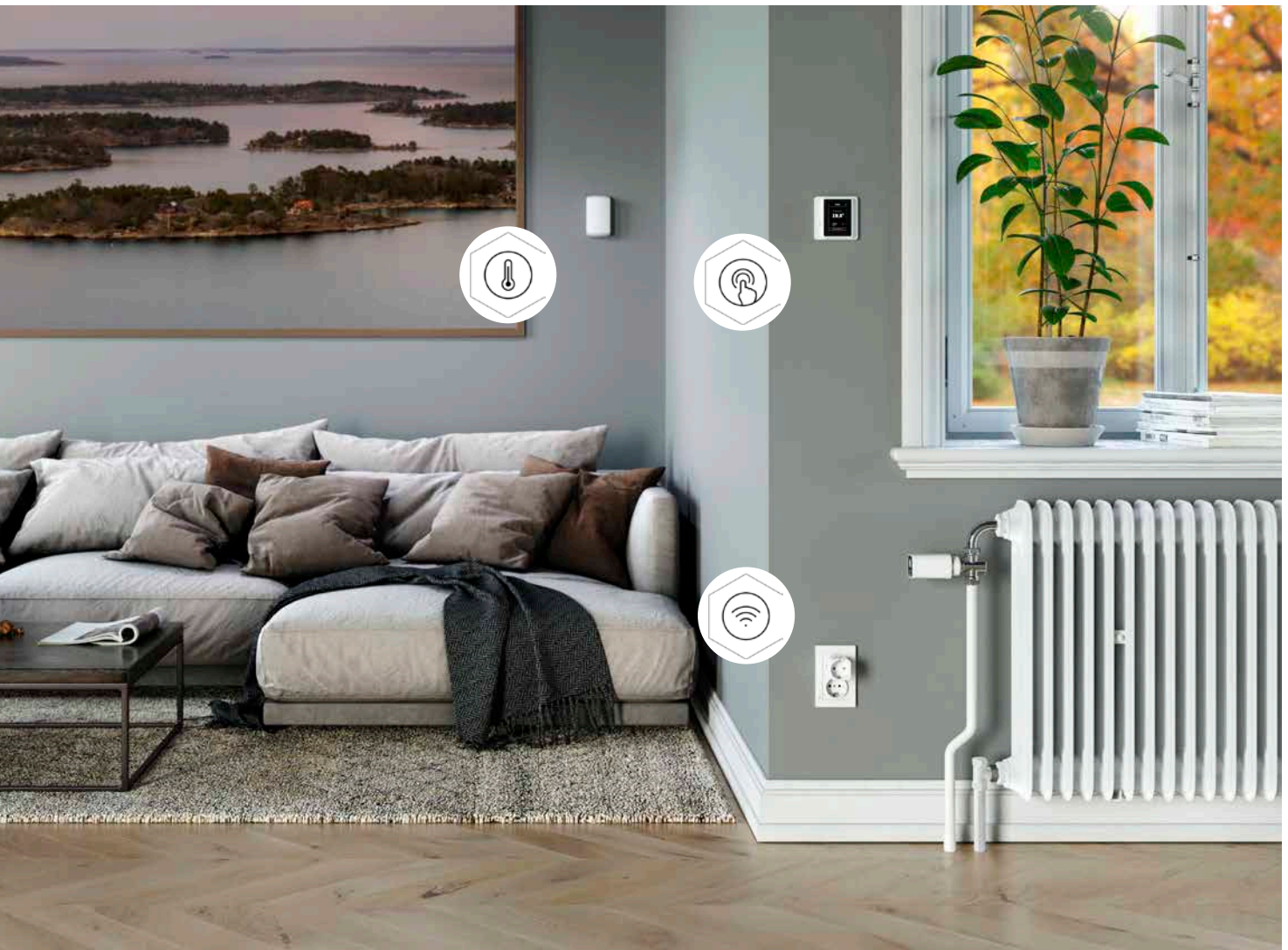
In the example to the left, a property with two climate systems is shown.

Climate system 1 is a radiator system with two zones.

Zone 1 controls it. Here is an RMU S40 which gives you easy access to the heat pump that together with THS 10 allows the heat pump to adjust to the heat from the fireplace faster.

Zone 2 is set for display, which means that the temperature and humidity can be read in the myUplink app or via myuplink.com.

Climate system 2 is an underfloor heating system with one controlling zone.



Room unit NIBE RMU S40

The NIBE RMU S40 is a wireless/wired room unit* with 2.8" touch screen and built-in temperature and humidity sensors. You use it for remote control and monitoring of your NIBE S-series heat pump, as a supplement to the myUplink app in your smartphone or tablet.

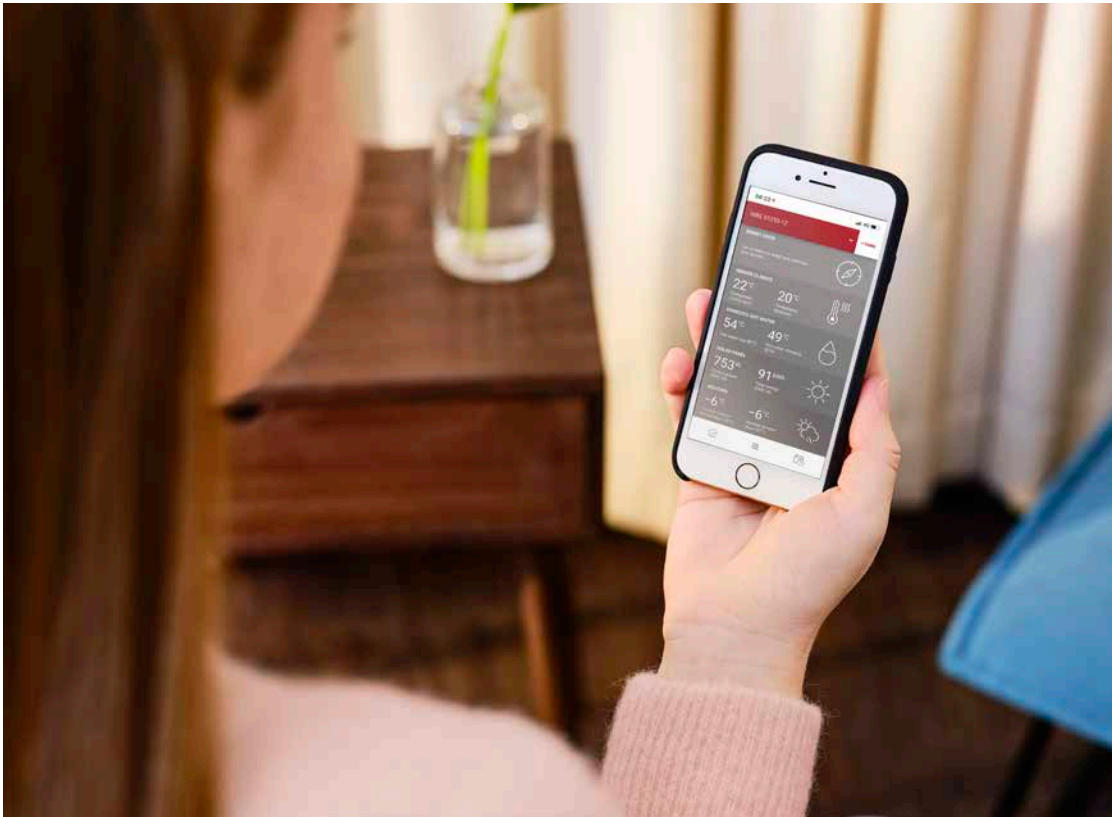
The room unit is easy to install and use. It has the same intuitive interface and design as myUplink and your heat pump. Choose a central place in your house, the kitchen perhaps, or anywhere that's convenient for you. In a large house with a lot of windows it can be a good idea to install one or more THS 10's as a complement.



The room unit also enhances the signal, improving communication between your smart home products when these are located at a distance from each other.**

*Requires external power supply, micro USB. Purchased separately.
**Repeater only when installed wireless.

The myUplink app is the key to your smart home



myUplink

As a companion to the NIBE S-series there is the myUplink app that is included at no extra cost.

Download the app and register to gain control of your heat pump from your smartphone or tablet, wherever you are.

You gain access to the following functions: monitoring, alarms, information on software updates, weather forecast control, historical data and Smart Price Adaption*. Some functions require a Premium subscription.



*) This requires a variable hourly tariff contract



Basic Subscription

The app is simple to use, with an interface you will recognise from your heat pump. It quickly provides you with a status overview of your heating system and heat pump. Here you can retrieve real time data from your heat pump. Once your smart accessories are connected to your heat pump and you have established zones, you can view the status, room by room. If your system requires your attention, you will quickly receive an alert via a push-message and an e-mail.

When you are connected to myUplink, your heat pump can easily be updated with the latest software. The download needs to be approved in the heat pump's display. The basic subscription includes weather forecast control and Smart Price Adaption.

Weather forecast control, included in the basic subscription, means that your heat pump adjusts itself according to the weather forecast, which is particularly useful when the weather changes rapidly. Your intelligent heat pump is proactive, knows when a change in the weather is coming and can cope effectively with shifts in temperature.

The Smart Price Adaption* functionality means that your heat pump works the hardest when the price of electricity is at its lowest and slows down during price peaks. Via myUplink, your heat pump gets information on the electricity prices for the coming 24-hour period and then adjusts its operations on the basis of the price and your expected heating and hot water needs.

Premium Subscription

A Premium subscription gives you the option of controlling your heat pump and adjusting settings in the app, regardless of where you are. You also gain access to historical data and a number of intelligent services such as voice control and IFTTT, allowing you to connect smart products to each other. With your intelligent accessories, you can do this room by room.

By allowing you to control your indoor climate, the app helps you save on energy costs. Good for the environment, as well as your wallet.

*) This requires a variable hourly tariff contract

NIBE'S SMART ACCESSORIES HELP YOU GET THE MOST OUT OF THE S-SERIES.

What that means for you is improved indoor comfort based on your needs and lower energy consumption.



CDS 10 Wireless CO₂, temperature and humidity sensor

This wireless sensor allows you to read the CO₂, temperature and humidity level in a room or climate zone using the myUplink app. For NIBE S-series heating installations with ventilation the indoor comfort level can automatically be adjusted to give you a comfortable indoor climate. For example, you can increase ventilation and lower the CO₂ level when there are a lot of people present or lower the ventilation to further reduce your energy costs. Because it is battery powered, it is easy to install, but it can also operate with an external power source using a micro USB.

Mount the thermostat in your room and connect it to your NIBE S-series heat and ventilation installation.

Price*: €89.90



THS 10 Wireless temperature and humidity sensor

This wireless sensor allows you to read the temperature and humidity in a room or climate zone using the myUplink app. On the heat pump you can see the current room temperature or change it in °C.

THS 10 replaces the fixed indoor sensor. Because it is battery powered, it is easy to install.

Mount the thermostat in your room and connect it to your NIBE S-series heating installation.

Price*: €49.90



ROT 10 Wireless room thermostat

The wireless room thermostat allows you to read and control the temperature of a room or a climate zone from the display of the room thermostat or via the myUplink app in your smartphone. For instance by increasing the ventilation when you have many guests or lower the ventilation for better savings when you are not at home. Because it is powered by a rechargeable battery, it is easy to install.

Mount the thermostat in your room and connect it to your NIBE S-series heat pump.

Price*: €99.90



EU version



UK version

RPP 10 Repeater

Enhances the signal, improving communication between your smart home products when they are placed at a distance from each other. For NIBE S-series heating installations, the repeater functions as a switch, giving you the opportunity to control it remotely, schedule On and Off times and measure energy consumption.

Plug in the repeater and connect it to your NIBE S-series heating installation.

Price*: €49.90



SRV 10 wireless radiator thermostat

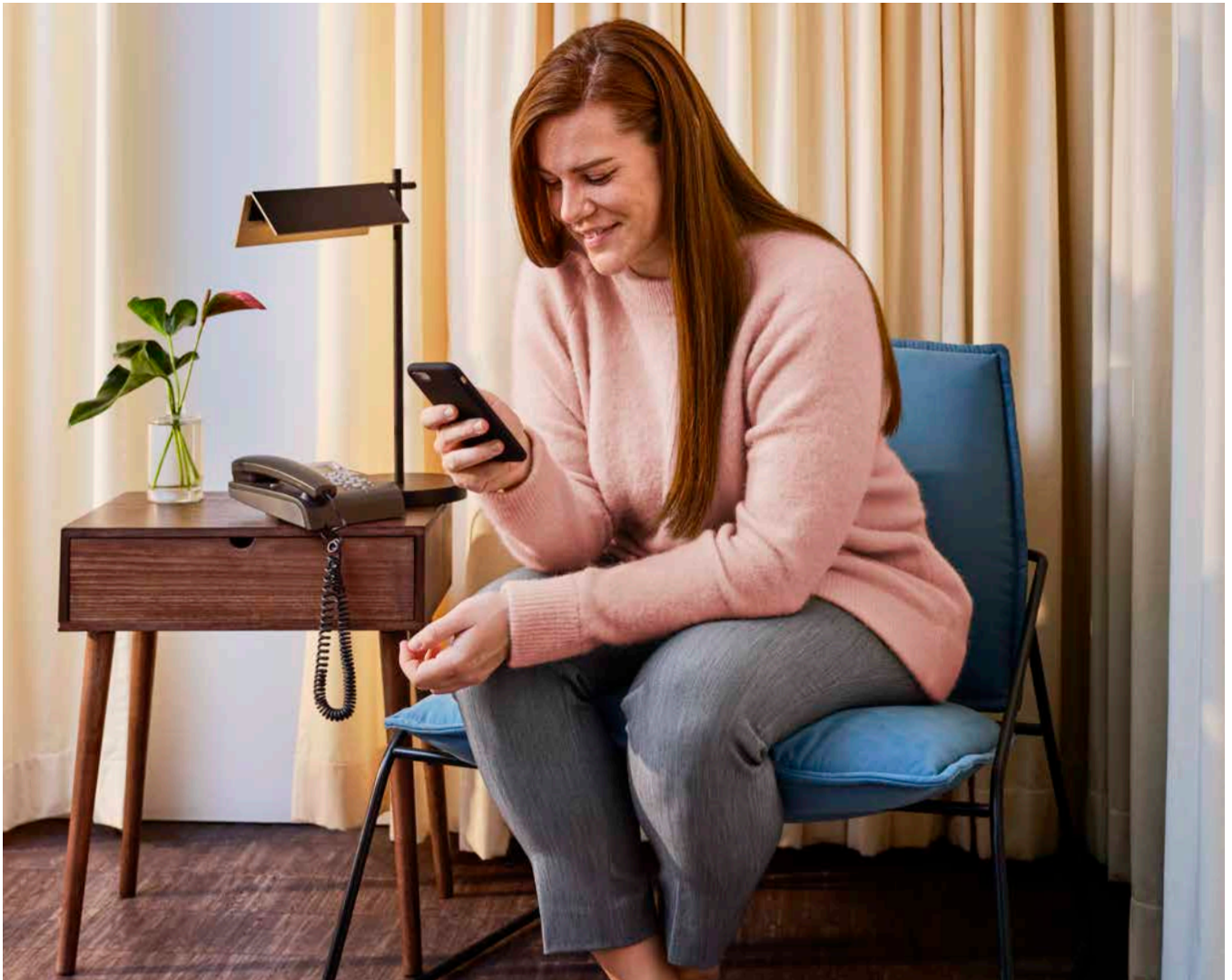
The wireless radiator thermostat allows you to control the heat in your radiators via the myUplink app or directly by using the thermostat. It helps you to obtain a comfortable indoor temperature, to heat rooms only when you need to and to save energy, for example by lowering the temperature of your bedroom at night. Because it is battery powered, it is easy to install.

The wireless radiator thermostat has a M30x1.5 connection. A Danfoss RA adapter is included so that it fits most heating systems. The adapter ARV 10 for M28x1.5 is available as an accessory, sold separately.

Exchange the thermostat on your radiator and pair the wireless radiator thermostat with your NIBE S-series heat pump for even more precise control of your heating system.

Price*: €42.00

Contact your installer or go to myuplink.com to order smart accessories for the NIBE S series.



Comfort through connectivity

We always strive to maximize the outcome of every product carrying the NIBE name while focusing on the system as a whole through connectivity. This way, we can offer you a wide range of smart and highly efficient products that can cool, heat, ventilate and supply your home with hot water. By harvesting power from nature, you can create the comfortable indoor climate and enjoy the comforts of your home with minimal impact on the environment. To us, that's what really matters.

It's in our nature.

NIBE Energy Systems
BOX 14, 285 21 Markaryd
Tel. 0433-27 30 00 | nibe.se

