



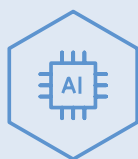
Ground source heat pump **NIBE S1255**



NIBE S1255 is an intelligent, inverter-controlled ground source heat pump with integrated water heater. NIBE S1255 provides optimum savings since the heat pump always performs efficiently and automatically adapts to your home's heating demand all year round. NIBE is a leading player in the field of inverter technology, with many years' experience of variable output ground source heat pumps and one of the widest product ranges on the market.

NIBE S1255 has a high seasonal performance factor, resulting in minimal operating costs. The heat pump is available in three different output sizes: 1.5–6 kW, 3–12 kW and 4–16 kW, and is suitable for both small and large properties.

With integrated wifi, the S Series is a natural part of your connected home. Smart technology adjusts the indoor climate automatically while you're in complete control from your phone or tablet. Giving high comfort and low energy consumption, while doing nature a favour at the same time. telefon eller surfplatta. Maximal komfort och minimal energiförbrukning – samtidigt som du gör naturen en tjänst.



- **Three output sizes and leading inverter technology for optimum customization.**
- **Optimal seasonal performance factor and minimal operating costs.**
- **User-friendly touch control and integrated wireless connectivity with energy saving smart technology for maximum comfort.**

Specifications NIBE S1255

| NIBE S1255 | | 1,5 – 6 kW | 3 – 12 kW | 4 – 16 kW |
|---|-------|------------------|-----------|-----------|
| Space heating efficiency class 35°C / 55°C ¹⁾ | | A+++/A+++ | | |
| Space heating efficiency class of the system 35°C / 55°C ²⁾ | | A+++/A+++ | | |
| Efficiency class hot water / charging profile ³⁾ | | A / XL | | |
| Nominal heating output (P _{designh}) | kW | 6 | 12 | 16 |
| SCOP _{EN14825} cold climate, 35°C / 55°C | | 5,5 / 4,1 | 5,4 / 4,3 | 5,5 / 4,2 |
| SCOP _{EN14825} average climate, 35°C / 55°C | | 5,2 / 4,0 | 5,2 / 4,1 | 5,2 / 4,1 |
| Output data according to EN 14511 nominal 0/35 – Rated output | kW | 3,15 | 5,06 | 8,89 |
| Output data according to EN 14511 nominal 0/35 – COP _{EN14511} | | 4,72 | 4,87 | 4,85 |
| Sound power level (L _{WA}) according to EN 12102 at 0/35 | dB(A) | 36 – 43 | 36 – 47 | 36 – 47 |
| Rated voltage | | 400 V 3N ~ 50 Hz | | |
| Refrigerant amount in CO ₂ -equivalent | ton | 2,06 | 3,55 | 3,90 |
| Height / Width / Depth | mm | 1800 / 600 / 620 | | |
| Integrated hot water heater | l | 180 | | |
| Weight complete heat pump | kg | 220 | 250 | 255 |

¹⁾ Scale for the product's efficiency class room heating: A+++ – D. ²⁾ Scale for the system's efficiency class room heating: A+++ – G. Reported efficiency for the system takes the product's temperature regulator into account. ³⁾ Scale for efficiency class hot water: A+ – F.

Comfort through connectivity

We always strive to maximize the outcome of every product carrying the NIBE name while focusing on the system as a whole through connectivity. This way, we can offer you a wide range of smart and highly efficient products that can cool, heat, ventilate and supply your home with hot water. By harvesting power from nature, you can create the perfect indoor climate and enjoy the comforts of your home with minimal impact on the environment. To us, that's what really matters.

It's in our nature.

A+++

The system's efficiency class for heating.

A  **XL**

The product's efficiency class and tap profile for hot water.

NIBE Energy Systems
BOX 14, 285 21 Markaryd
Tel. 0433-27 30 00 | nibe.se

 **NIBE**