



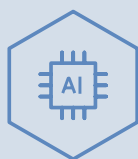
Ground source heat pump **NIBE F1155**



NIBE F1155 is an intelligent, inverter-controlled ground source heat pump without integrated hot water tank, which makes it easy to install in locations with low ceilings. A separate hot water tank is selected according to hot water requirements. NIBE F1155 provides optimum savings since the heat pump automatically adapts to your home's heating demand. NIBE is a leading player in the field of inverter technology, with many years' experience of output-regulating ground source heat pumps and one of the widest product ranges on the market.

NIBE F1155 has a high seasonal performance factor, resulting in minimal operating costs. The heat pump is available in three different output sizes: 1.5–6 kW, 3–12 kW and 4–16 kW, and is suitable for both small and large properties.

Thanks to smart technology, the product gives you control over your energy consumption and will be a key part of your connected home. The efficient control system automatically adjusts the indoor climate for maximum comfort, and you do nature a favour at the same time.



- **Leading inverter technology and separate hot water tank for optimum customisation.**
- **Three output sizes for optimal seasonal performance factor and minimal operating costs.**
- **Energy-saving smart technology with user-friendly control for maximum comfort.**

Specifications NIBE F1155

NIBE F1155		1,5 – 6 kW	3 – 12 kW	4 – 16 kW
Space heating efficiency class 35°C / 55°C ¹⁾			A+++ / A+++	
Space heating efficiency class of the system 35°C / 55°C ²⁾			A+++/A+++	
Efficiency class hot water / charging profile ³⁾		A / XL	A / XXL	
Nominal heating output (P _{design,h})	kW	6	12	16
SCOP _{EN14825} cold climate, 35°C / 55°C		5.5 / 4.1	5.4 / 4.3	5.5 / 4.2
SCOP _{EN14825} average climate, 35°C / 55°C		5.2 / 4.0	5.2 / 4.1	5.2 / 4.1
Output data according to EN 14511 nominal 0/35 – Rated output	kW	3.15	5.06	8.89
Output data according to EN 14511 nominal 0/35 – COP _{EN14511}		4.72	4.87	4.85
Sound power level (L _{WA}) according to EN 12102 at 0/35	dB(A)	36 – 43	36 – 47	36 – 47
Rated voltage		230 V ~ 50 Hz		
Refrigerant amount in CO ₂ -equivalent	ton	2.06	3.55	3.90
Height / Width / Depth	mm	1500 / 600 / 620		
Weight complete heat pump	kg	150	180	185

¹⁾ Scale for the product's efficiency class room heating: A++ – G. ²⁾ Scale for the system's efficiency class room heating: A+++ – G. Reported efficiency for the system takes the product's temperature regulator into account. ³⁾ Scale for efficiency class hot water: A – G.

Sustainable energy solutions

Since 1952, NIBE has been manufacturing energy-efficient and sustainable climate solutions for your home. It all started in Markaryd in Sweden and we value our Nordic heritage by harnessing the power of nature. We combine renewable energy with smart technology in order to offer effective solutions so that together we can build a more sustainable future.


Whether it's a chilly winter's day or a hot summer's afternoon, we need a well-balanced indoor climate for a comfortable everyday life, whatever the weather. Our wide range of products supplies your home with cooling, heating, ventilation and hot water, so that you can create a pleasant indoor climate with a low impact on nature.

A+++

The system's efficiency class for heating.

A  **XL**

The product's efficiency class and tap profile for hot water together with VPB 300 (applies to F1155-6).

A  **XXL**

The product's efficiency class and tap profile for hot water together with VPB 300 (applies to F1155-12 and -16).